



## DISCOVER THE HEARTBEAT OF BANGKOK THROUGH LUXURIOUS AUTHENTICITY.

In the heart of one of the world's most enigmatic capital cities, Anantara Siam Bangkok Hotel offers new explorers a luxurious retreat to enjoy life's finer pleasures and intriguing, original journeys.

Opening Date:	15 April 1983
Address:	155 Rajadamri Road, Bangkok 10330 Thailand
Telephone:	+66 (0) 2126 8866
Facsimile:	+66 (0) 2253 9195
Central Reservations:	+66 (0) 2365 9110
Central Reservations Email:	reserveanantara@anantara.com
Email:	siam@anantara.com
Web Address:	<a href="http://anantara.com/en/siam-bangkok">anantara.com/en/siam-bangkok</a>



## LOCATION

Anantara Siam Bangkok is located in the most central area of Bangkok and offers easy access for exploring everything Bangkok has to offer, whether you're staying with us for business, shopping, cultural sightseeing or a cruise on the Chao Phraya River.

Located in the heart of the Ratchaprasong shopping and entertainment district, our luxury urban retreat is located directly next to the sky train station at BTS Ratchadamri connecting you to the entire city with ease. Bangkok's best shopping and Lumpini Park is located 2 minutes away.

Management:

Anantara Hotels, Resorts & Spas

Ownership:

Rajadamri Hotel Public Company Limited

General Manager:

Martin Zarybnicky

[mzarybnicky@anantara.com](mailto:mzarybnicky@anantara.com)

Cluster Director of Sales  
and Business Development:

Supachai Punja-apisith

[supachai\\_pu@minor.com](mailto:supachai_pu@minor.com)

Cluster Director of  
Marketing & Communications:

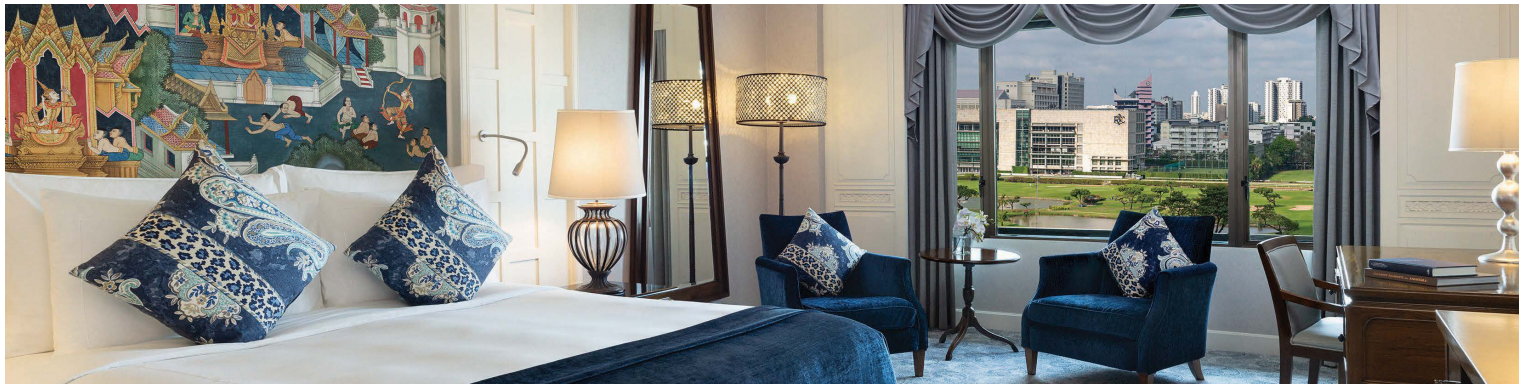
Vorapipat Dabbaransi

[Vorapipat\\_da@anantara.com](mailto:Vorapipat_da@anantara.com)

Director of Public Relations:

Slilla Svetsreni

[slilla\\_sv@anantara.com](mailto:slilla_sv@anantara.com)



## ACCOMMODATION

Our 354 rooms and suites provide a welcoming ambience that blends traditional Thai and contemporary design, refined by authentic artifacts, teak furnishings and silk fabrics. Offering luxurious city living, plush comforts are enjoyed with views over tropical gardens, the pool or the private golf course of the Royal Bangkok Sports Club.

### Deluxe Room

Blending inviting comforts and tasteful luxury, our 42 sqm rooms exude the warmth of home with unique Thai touches. A sophisticated sense of destination pervades each room as you enjoy tropical garden views or the private golf course of the Royal Bangkok Sports Club. Soak in the deep tub of your marble bathroom after exciting city days.

### Premier Room

These 42 sqm rooms are designed with contemporary décor blends with comfy, elegant furnishings and signature Thai touches to exude a luxuriously serene aesthetic. Feel refreshed by verdant views of our hotel's glorious tropical gardens or the immaculate golf course of the Royal Bangkok Sports Club through expansive windows. Relax on the sofa by the window or catch up on emails at the desk. Soak in the tub of your marble bathroom to wind down, and fall sleep in a sumptuous bed dressed in the finest linen with a fluffy down pillow.

### Grand Premier Room

Grand Premier Rooms are airy and bright, and feature multiple bedside power outlets and USB plugs. Finished with Thai-inspired design touches and upholstered in luxurious fabrics, the rooms feel timeless, but also serene and contemporary. Enjoy a refreshing rinse in the rain shower or a leisure bath with luxury amenities in a deep-soaking bathtub in your marble bathroom.

### Kasara Club Room

Stretch out in city sophistication in these well-appointed rooms. The lavish accommodation pays homage to Thai culture with decorative artwork. Gaze onto soothing views of our hotel's tropical gardens or the private golf course of the Royal Bangkok Sports Club. Benefit from Kasara Lounge access to add comfort and convenience to your stay.

### Siam Suite

Space and comforts define our 72 sqm Junior Suites. Feel refreshed in the city with spectacular views. The luxury of greater room creates an inviting homely haven. Additional bed available upon request.

### Garden Terrace Room

52 sqm Garden Terrace Rooms feature a private entrance with white columns, lush greenery and Thai statues. Dine outside on the patio amidst landscaped gardens, overlooking the pool and an exotic lotus pond. The marble bathroom features a domed ceiling which draws in daylight.

### Garden Terrace Suite

The unique 77 sqm Garden Terrace Suite boasts an ornate private entrance. Inside, the elegant bedroom adjoins a bright and inviting marble bathroom. A plush separate living room, leads to a dining patio amongst splendid gardens with impressive views.



## One Bedroom Suite

These distinguished 84 sqm suites feature a comfortable living room with unobstructed views of the Royal Bangkok Sports Club. For your convenience, a connecting suite makes a two bedroom retreat.

## Royal Suite

Our 126 sqm suites are elegant and spacious. Enjoy a luxurious bedroom, marble bathroom and large living area with marvellous views. The six seat dining table and guest powder room create the perfect setting for entertaining.

## Two Bedroom Family Suite

Experience distinguished Thai style in these spacious family suites. The comfortable living room allows space to chill out after a long day of city exploration. Admire the unobstructed views of the Royal Bangkok Sports Club. Immerse yourself in a warm bath for ultimate relaxation. Interconnecting rooms offer greater access for families and friends.

## Two Bedroom Royal Suite

Enjoy unparalleled amenities and exclusive spaces in your corner rooms overlooking the RBSC golfing green, one of the oldest and most prestigious private sports clubs in Thailand. Ideal for family stays, your luxury accommodation comes with two en-suite bedrooms and a stately dining room where you can gather at the formal dining table. Wake up to inspiring scenes through expansive framed windows while staying in one of the top suites in Bangkok that celebrates the legacy of King Rama VI who ruled between 1910 to 1925 and gifted the land on which Anantara Siam sits, to the people of Bangkok. Enjoy Kasara Executive Lounge privileges.

## Two Bedroom Jim Thompson Explorer Suite

Boasting exceptional panoramic views, this 198 sqm two bedroom suite evokes a Thai summer home. Painted panelled walls and polished teak floors offer an elegant backdrop to the beautiful furniture, fabrics and artwork. Entertain in the open-plan living and dining room. Relax in the office library, designed with hardwood floors and oversized writing desk. Two spacious marble bathrooms each feature a deep soaking tub and separate rain shower - in addition to a guest powder room.

## Anantara Presidential Suite

Overlooking the pool and garden, the 344 sqm Anantara Presidential Suite is designed with contemporary and antique artwork. The master bedroom is accompanied by a dressing room, massage suite, deep soaking tub and whirlpool. Gatherings can be hosted for up to 18 guests in the living space, and dinner parties for 12 in the private dining room.

## Two Bedroom Anantara Presidential Suite

A lavish haven for discerning travelers, this sanctuary exudes luxury and elegance. The formal sitting room and two bedrooms are adorned with precious antiques, teak furnishings, and silks. The master suite, enveloped in rich jewel tones and heavy drapes, invites deep slumber and features a lounge, whirlpool, dressing, and massage rooms. Entertain guests in style with a private entrance through lush gardens, leading to a lavishly decorated dining room for exquisite dinners.



## ROOM FEATURES

- King size bed or twin beds with a choice of duck-down or hypoallergenic pillows
- Tropical garden, golf course or city views
- Internet access via LAN and WiFi
- International satellite TV
- Working desk with universal socket and USB Ports
- Three dual-line telephones with multi-language voicemail
- Individually controlled air conditioning
- Tea and coffee-making facilities
- Mini bar
- In-room safety deposit box



ROOM TYPE	TOTAL		ROOM SIZE (SQM)	BALCONY SIZE (SQM)	ACCEPT ROLL AWAY BED	MAX OCCUPANCY
Deluxe Room	140 Rooms		42	N/A	No	2 adults or 1 adult + 1 child
	97 King	43 Twin				
Premier Room	87 Rooms		42	N/A	Yes	3 adults or 2 adults + 1 child
	69 King	18 Twin				
Grand Premier Room	26 Rooms		42	N/A	Yes	3 adults or 2 adults + 1 child
	17 King	9 Twin				
Kasara Club Room	59 Rooms		42	N/A	Yes	3 adults or 2 adults + 1 child
	34 King	25 Twin				
Siam Suite	15 Suites		72	N/A	Yes	3 adults or 2 adults + 1 child
	7 King	8 Twin				
Garden Terrace Room	7 Rooms		52	8	No	2 adults or 1 adult + 1 child
	7 King	N/A				
Garden Terrace Suite	1 Suite		77	10	No	2 adults or 1 adult + 1 child
	1 King	N/A				
One Bedroom Suite	10 Suites		84	N/A	Yes	3 adults or 2 adults + 1 child
	8 King	2 Twin				
Royal Suite	7 Suites		126	N/A	Yes	3 adults or 2 adults + 1 child
	5 King	2 Twin				
Two Bedroom Family Suite*	4 Units		126	N/A	Yes	4 adults or 3 adults + 2 children
	2 King	2 Twin				
Two Bedroom Royal Suite*	3 Units		168	N/A	Yes	4 adults or 3 adults + 2 children
	3 King	N/A				
Two Bedroom Jim Thompson Explorer Suite	1 Suite		198	N/A	Yes	6 adults or 5 adults + 3 children
	1 King	1 Twin				
Anantara Presidential Suite	1 Suite		344	N/A	Yes	3 adults or 2 adults + 2 children
	1 King	N/A				
Two Bedroom Anantara Presidential Suite*	1 Suite		386	N/A	Yes	7 adults or 6 adults + 4 children
	2 King	N/A				

\* Two Bedroom Family Suite is a combination of One Bedroom Suite and Kasara Club Room

\* Two Bedroom Royal Suite is a combination of Royal Suite and Kasara Club Room

\* Two Bedroom Anantara Presidential Suite is a combination of Presidential Suite and Kasara Club Room



## KASARA EXECUTIVE LOUNGE

Opening hour: 6.30 am - 10.00 pm, daily

Breakfast: 6.30 am - 10.00 am

Afternoon tea: 2.00 pm - 4.00 pm

Canapé: 5.30 pm - 7.30 pm

Refresh beverage: 6.30 am - 9.00 pm

### KASARA EXECUTIVE LOUNGE SERVICES AND AMENITIES

- Express check-in and check-out at the dedicated Kasara Executive Lounge check-in counter.
- Welcome refreshment upon arrival at the Lounge.
- Coffee/ tea with a wake-up call.
- Pre-dinner canapés and drinks in the evening from 5.30 pm to 7.30 pm served at the Lounge.
- All-day snacks and refreshments are served at the Lounge.
- Complimentary use of one of the Montathip course's three private meeting rooms for one hour per stay (THB 1,000++ for each additional hour).
- Two pieces of garment pressing per room per day.
- Unlimited local telephone calls and no surcharge for credit card access calls.
- Hi-speed in-room Wi-Fi.
- Use of the Montathip course business centre facilities from 6.30 am – 10.00 pm.
- 10% off on à la carte treatments at Anantara Spa of Anantara Siam Bangkok Hotel

A full menu is also available for guests who wish to enjoy a meal in the lounge (fees apply). Kasara members are welcome to invite guests for breakfast and evening canapés for a fee, and cocktails at menu prices. Children under the age of 12 are charged as per consumption.

# DINING

## THE BEST RESTAURANTS IN BANGKOK.

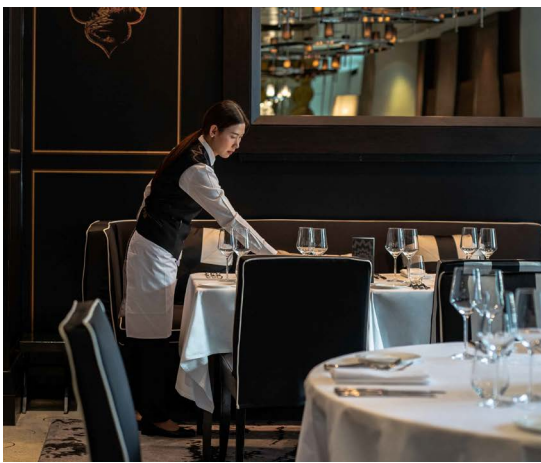
Award-winning gastronomy across a range of classic, contemporary and al fresco settings makes dining at Anantara Siam Bangkok Hotel a pleasure. Sunset cocktails or bring the family for Sunday Brunch, featuring cuisines from a number of the best restaurants in Bangkok.



### The Lobby

Savour gastronomic delights in the grandeur of our lobby. Stately columns extend to the magnificent frescoed ceiling, while seasonal florals brighten the space. Begin your day with a sumptuous snack, order a bite from any one of our dining establishments. Partake in a Mariage Freres afternoon tea.

Opening hours: 8.00 am - 10.30 pm  
Afternoon tea 2.00 pm – 6.00 pm  
Cuisine: International  
Seating capacity: 80



### Café Wolseley Bangkok

One of London's best-loved restaurants, the iconic 'The Wolseley', is bringing its distinguished European fare to Bangkok. Combining British heritage with European grandeur, diners can expect classic Wolseley dishes alongside contemporary additions.

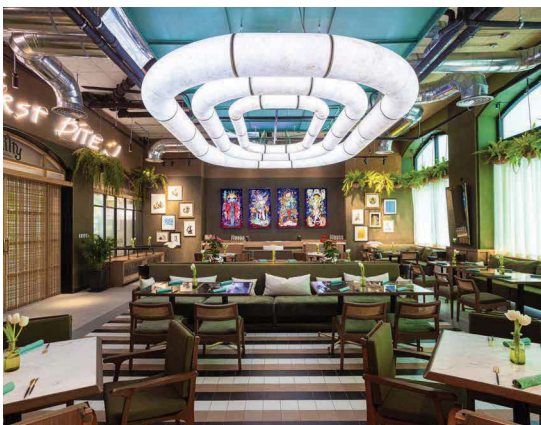
Opening hours: Lunch 12.00 noon – 2.30 pm  
(Monday to Saturday)  
Dinner 6.00 pm – 10.30 pm  
(Monday to Sunday)  
Cuisine: European, British Café  
Seating capacity: 66



### Shintaro

Relish the taste of Japan without leaving downtown Bangkok at our refined eatery. With a selection of rare dishes, sushi rolls and noodles, Shintaro tempts with an authentic menu and a wide selection of traditional beverages. Watch chefs at work at the sushi bar, a chilled concoction in hand, or lounge on tatami mats.

Opening hours: Lunch 12.00 noon – 2.30 pm  
Dinner 6.00 pm – 10.30 pm  
Monday to Sunday  
Cuisine: Japanese  
Seating capacity: 38



### GUILTY

A drinking-dining den with South American roots has found its place in the heart of the chosen destination. It serves as a haven for hedonists and pleasure-seekers, embracing a carefree vibrant atmosphere where enjoying oneself is encouraged. The Chef's culinary creations are a fusion of sensational South American flavours, with a playful flirtation of Nikkei influence. Accompanying the delightful food is a mixologist who expertly crafts alluring concoctions inspired by the diverse regions of the continent.

Opening hours: Lunch 12.00 noon – 2.30 pm (Monday to Saturday)  
Dinner 6.00 pm – midnight (Monday to Sunday)  
Cuisine: South American  
Seating capacity: 65





## Spice Market

Designed to resemble a charming old Thai spice shop, serving traditional Thai cuisine, our signature restaurant brings authentic flavours from around the kingdom.

Traditional a la carte Thai favorite dishes served with a twist, range of tasting menus. Thai wines and craft beers, as well as carefully crafted Thai flavored cocktails.

**Opening hours:** Lunch 12.00 noon – 2.30 pm  
(Monday - Saturday)  
Dinner 6.00 pm – 10.30 pm  
(Monday to Sunday)

**Cuisine:** Thai

**Seating capacity:** 62



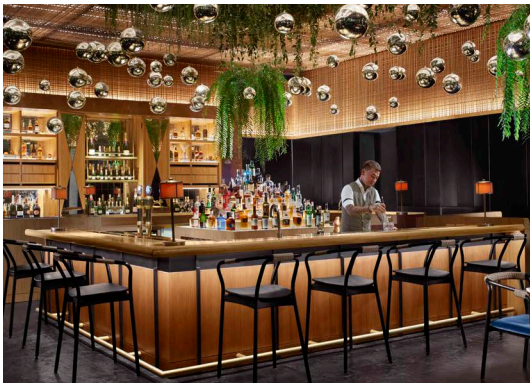
## Biscotti

A Michelin guide-listed Italian fine-dining restaurant in Bangkok. Indulge in the passions of Italy in contemporary style with a kitchen-to-table concept reflected in the chef's table. Watch talented chefs in the open kitchen as you savour home-style pizzas, pastas and seafood dishes, paired with elegant wines.

**Opening hours:** Lunch 12.00 noon – 2.30 pm  
Dinner 6.00 pm – 10.30 pm  
(Monday to Sunday)

**Cuisine:** Italian

**Seating capacity:** 70



## Aqua

Over more than 20 years, Aqua has established itself as an institution, favoured as an elegant escape in the heart of Bangkok. And now, after extensive renovations, the hidden oasis warmly welcomes you back. Clink crystal glasses of artfully crafted classic cocktails beside the signature koi pond. Unwind to New Orleans Jazz and R 'n' B amid the verdant fronds.

**Opening hours:** 12.00 noon – midnight, daily  
**Cuisine:** International, Drinks & Light Dining  
**Seating capacity:** 60



## The Terrace

Casual and serene with garden and pool views, refreshing beverages compliment perfectly our menu of Mediterranean and Thai cuisine, exceptional house specialties, sandwiches and tropical fruits.

**Opening hours:** 10.00 am – 7.00 pm, daily  
**Cuisine:** International and Thai



## Mocha and Muffins

Dine in or al fresco on the spacious new terrace and explore the new menu featuring freshly baked cakes, pastries and bread, as well as ice cream, milk shakes and a range of healthy options including build-your-own salads. Sip carefully crafted coffee or artisanal tipples and give in to your cravings any time of day.

Opening hours: 7.00 am - 9.00 pm, daily  
Cuisine: Drinks and Light Dining  
Seating capacity: 67



## Sunday Brunch

Lively, elegant and artistic, the Sunday Brunch at Anantara Siam is a culinary highlight of the week. Start with fine-dining plates of Latin American ceviche, Arabic mezze, Indian tandoor and Thai food or honour the tradition with fresh seafood appetisers. Dance to live Latin tunes in a leafy courtyard as you sip on craft cocktails, fine wines and crisp Champagne, while children have their own fun with magicians, balloon artists and other activities.

Opening hours: 12.00 noon – 3.30 pm  
Cuisine: International



## In-Room Dining

In-room dining allows you to relax in comfort as we bring a world of flavours to you, any time of the day or night.

Opening hours: 24 hours , daily



## Dining by Design

Experience a dining journey like no other. Choose your dream location and we'll create a picturesque dining setting under the stars. Customise a special menu with our chef

to suit your tastes and preferences. Share an unforgettable meal by the pool or in a private sala, with private butler service.

Opening hours: 6.00 pm - 10.30 pm



## MEETINGS

Our facilities cater for every kind of social and corporate function. Large scale venues are fully equipped with advanced lighting, audio-visual and staging capabilities for up to 700 guests. Host elegant conferences and events in venues adorned with silk murals and natural light.

Dedicated event co-ordinators ensure every element flows seamlessly, from VIP welcome gifts, music, themed decor and entertainment, to innovative catering and impeccable service to enrich the experience.

## Ballroom

Host lavish celebrations for as many as 700 guests in the grand 814 sqm Ballroom. Hand-painted silk murals and gold-leaf silk panels create a classic style, accentuated by natural daylight. Host small gatherings on the terrace, featuring a gazebo and ponds filled with golden carp. Enhance your event with computerised lighting and audio-visual technology.

## Montathip 1, 2, 3 and 4

This meeting and function venue offers a highly flexible facility. Use the space as one expansive area for up to 400 people or divide it into four separate rooms. The floor-to-ceiling windows fill the space with natural light. Sophisticated décor is detailed with Thai accents.

## Montathip Boardroom

Seating 12 executives, the Montathip Boardroom is the ideal choice for prestigious, high powered meetings.

## Pimarnman Room

With 237 sqm of elegant space, the Pimarnman Room hosts 55 to 400 guests in a range of meetings and event set-ups.

## Amorn

Intimate and elegant, the Amorn Room can host up to 40 guests for private luncheons, cosy cocktail parties or executive board meetings.

## Ratana and Kosin

With teak panels and wooden sculptures from northern Thailand, Ratana and Kosin blends seamlessly with state-of-the-art technology, high-tech sound and light systems are accompanied by remote-controlled projector screens. For larger events, Ratana can be combined with Kosin - creating Ratanakosin – which can host up to 120 people.

## Busaba

Host meetings for 20 executives in your choice of seating set ups.

## Dara

Natural daylight creates a bright and airy ambience. Hidden behind modern Thai furnishings, the latest in high-tech AV equipment makes it easy to create memorable receptions and productive business, for up to 50 guests. The second floor location provides easy access to Montathip 1, 2, 3 and 4, as well as the hotel lobby and guest rooms.

## Napa

With sunlight streaming in through grand windows, Napa's contemporary Thai style is inviting for every kind of function - from cocktail parties to executive board meetings for up to 50 guests. State-of-the-art sound and lighting equipment fit seamlessly with exotic silks and wooden sculptures.

## Suriyan and Chandra

Daylight streams through large windows, brightening the exotic silks and wooden sculptures. Accommodating up to 50 people, this is an ideal venue for meetings, press conferences and cocktail parties. For larger events, Suriyan can be combined with Chandra - creating Suriyanchandra - which can host up to 120 people. The Chandra Foyer is a versatile 56 sqm pre-function area.

MEETING ROOMS	AREA		DIMENSION (LxWxH)		THEATRE	CLASS ROOM	U-SHAPE	BOARD ROOM	BANQUET 10	COCKTAIL	H-SQUARE
	SQM	SQ FT	METRES	FEET							
Ballroom	814	8,760	37x22x5	1,456x866x196	700	320	100	-	400	700	118
Pimarnman	237	2,551	25.5x9.3x6	1,003x366x236	220	120	55	50	140	300	60
Montathip 1	152	1,636	16x9.5x4	629x374x157	144	84	45	30	100	150	50
Montathip 2	64.4	693	8.7x7.4x4	342x291x157	60	36	24	20	60	50	28
Montathip 3	142.4	1,533	16x8.9x4	629x350x157	144	84	45	30	100	120	50
Montathip 4	68.5	737	8.9x7.7x4	350x303x157	60	36	24	20	60	50	28
Montathip Boardroom	52.5	565	7.5x7x2.85	295x275x112	-	-	-	12	-	-	-
Montathip 1-4	427.3	4,600	-	-	-	-	-	-	360	700	-
Amorn	60.5	651	8.4x7.2x3	330x283x118	40	27	20	20	40	40	24
Ratana	61.2	659	9x6.8x3	354x267x118	40	27	20	20	40	40	24
Kosin	61.2	659	9x6.8x3	354x267x118	40	27	20	20	40	40	24
Ratanakosin	122.4	1,318	9x13.6x3	326x370x94	100	60	35	30	90	100	46
Napa	78	840	8.3x9.4x2.4	326x370x94	50	30	22	16	40	50	28
Dara	83.3	897	8.5x9.8x2.4	334x385x94	50	30	22	16	40	50	28
Suriyan	78.9	849	8.4x9.4x2.4	330x370x94	50	30	22	16	40	50	28
Chandra	78.9	849	8.4x9.4x2.4	330x370x94	50	30	22	16	40	50	28
Chandra Foyer	56.7	-	6x9.4	236x370	-	-	-	-	-	-	-
Suriyanchandra	157.9	1,700	16.8x9.4x2.4	661x370x94	140	80	45	34	120	120	42
Busaba	59.5	642	7x8.5x2.3	275x334x90	60	-	20	20	-	-	20



## WEDDINGS

Anantara invites you to treasure every precious moment of your journey together – from an imaginative surprise proposal to the wedding day of your dreams.

Enjoy a personal consultation with a Wedding Specialist to discuss invitations, gifts and transport arrangements, pre-wedding celebrations and tailored arrangements for the big day itself. Enjoy a private menu tasting with renowned Anantara chefs. Organise a wedding photo shoot on The Grand Staircase, upper terrace, pool and the Ballroom garden. You can also take advantage of a private consultation to plan wonderful honeymoon experiences.



## LEISURE

Anantara Siam Bangkok is a tropical oasis in the midst of the city. Set out on foot to explore the most luxurious malls. Hop on the skytrain to Bangkok's famous sights. Unwind at the hotel with world-class facilities and the services of our gurus.

### At the Hotel

- 25 m terrace pool
- 24-hour health club with gym, yoga studio, squash courts and steam rooms
- Parichart Court shopping arcade
- Truefitt & Hill gentlemen's barbershop
- Tara Salon
- VIVID IV Drip bar
- Morning wellness at Lumpini Park
- Spice Spoons Thai Cooking Experience

### For Families

- Kids' club
- Children's amenities
- Babysitting

### Area Attractions

- Erawan Shrine: 3-minute walk
- Gaysorn Village: 5-minute walk
- CentralwOrld: 8-minute walk
- Siam Paragon: 15-minute walk
- Central Embassy: 15-minute walk
- Lumpini Park: 10-minute walk
- Chao Phraya River: 20-minute drive
- The Grand Palace: 20-minute drive
- Jim Thompson House: 20-minute drive





## ANANTARA SPA

Experience Thailand's renowned hospitality in the luxury of the Anantara Spa. Relax and unwind with exotic Thai wellness traditions and trusted ancient Asian therapies. Pamper yourself with treatments that harness advanced western spa wisdom, including a range of facials by Biologique Recherche, designed to detoxify, oxygenate, sculpt and lift. Indulge in our special spa packages for optimum wellbeing.

### SIGNATURE SPA TREATMENTS

#### The Soul of Siam

Experience Thailand's renowned hospitality in the luxury of the Anantara Spa. Relax and unwind with exotic Thai wellness traditions and trusted ancient Asian therapies. Pamper yourself with treatments that harness advanced western spa wisdom, including a range of facials by Biologique Recherche, designed to detoxify, oxygenate, sculpt and lift. Indulge in our special spa packages for optimum wellbeing.

#### Anantara Signature Massage

Combining revered eastern and western techniques, this massage stimulates the circulation and deeply relaxes muscles. Meanwhile, reflexology promotes overall wellbeing.

### SPA FACILITIES

- 2 couple suites
- 1 deluxe couple suite
- 4 single suites
- Treatment suites feature a shower, and some also a private Roman style tub or steam room
- Manicure and pedicure room
- poolside massages
- Waxing treatment room

Opening hours: 10.00 am – 10.00 pm





## AIRPORT TRANSPORTATION

Suvarnabhumi International Airport is approximately a 60-minute drive from the hotel and offers direct and connecting services to almost every destination worldwide. Don Muang International Airport is just a 45-minute drive away.

## TRAVEL NOTES

**Voltage** 220 – 240AC, 50 Hertz

**Currency** Thai Baht (THB)  
USD 1 = THB 35\*  
\*rate subject to fluctuation

**Time Zone** GMT +7 hours

### Climate

November – February (Dry season): Temperatures range between 23°C to 31°C accompanied by refreshing winds. Natural fibres and breathable clothing are recommended.

March – May (Hot season): Between March and May the temperatures range from 30°C to 35°C. Natural fibres and breathable clothing are recommended.

June – October (Monsoon season): Temperatures range from 24°C to 31°C. Refreshing rain showers often last for only short periods before becoming sunny once again. Natural fibres, breathable clothing and light waterproofs are recommended.