

  
ANANTARA  
GUIYANG · RESORT  
贵阳安纳塔拉度假酒店

## REFRESHING LUXURY THAT INSPIRES IN CHINA'S STUNNING FOREST CITY.

Offering refreshing luxury in China's beautiful Forest City, Anantara Guiyang Resort is the first international luxury resort in Guiyang. The resort is a unique oasis, surrounded by picturesque mountain scenery.

**Address:**

CREC International Eco City, Shuanglong Airport Economic Zone, Guiyang, Guizhou Province, China

**Telephone:**

+86 851 823 88888

**Facsimile:**

+86 851 855 08116

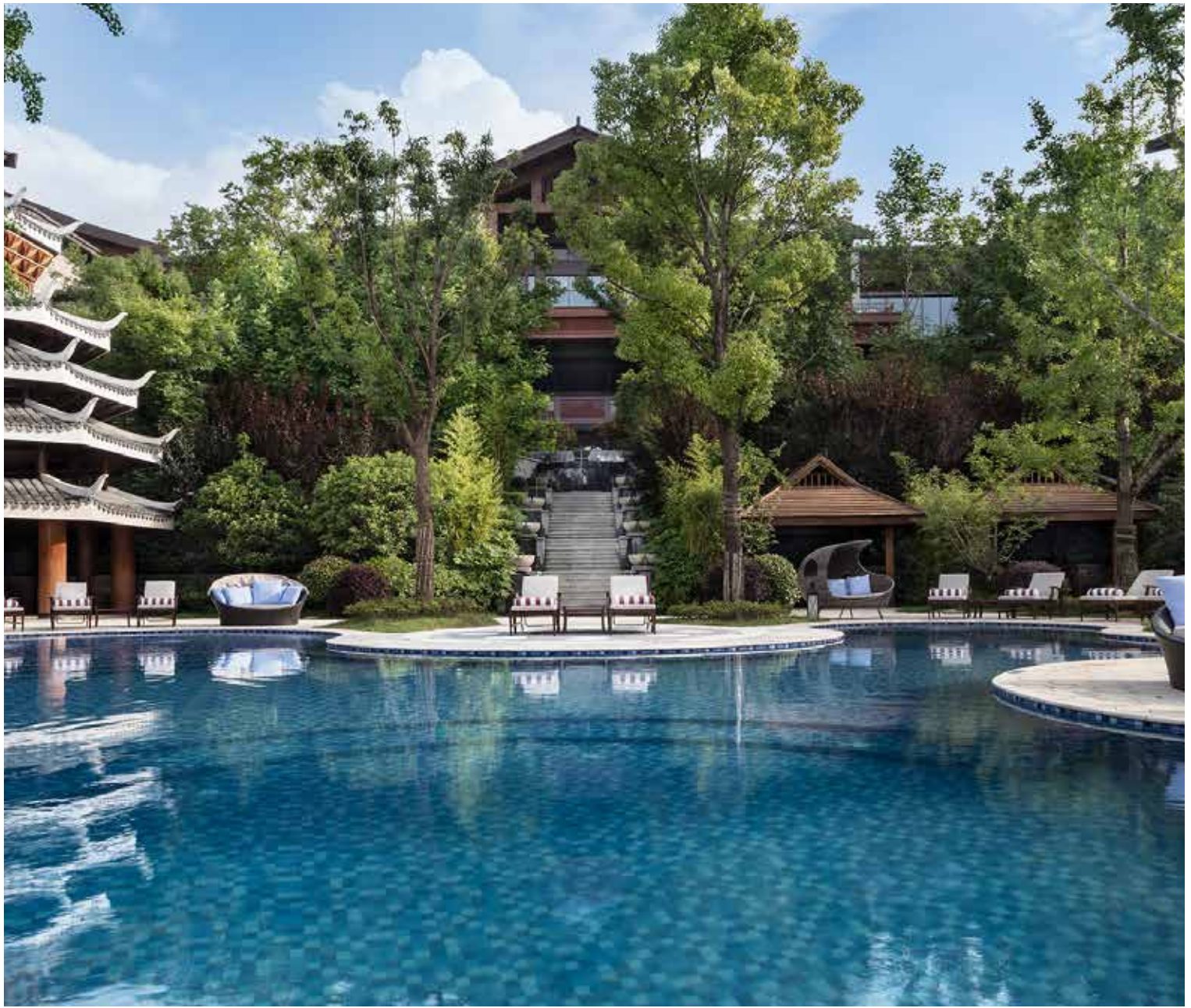
**Email:**

[guiyang@anantara.com](mailto:guiyang@anantara.com)

**Web Address:**

[guiyang.anantara.com](http://guiyang.anantara.com)



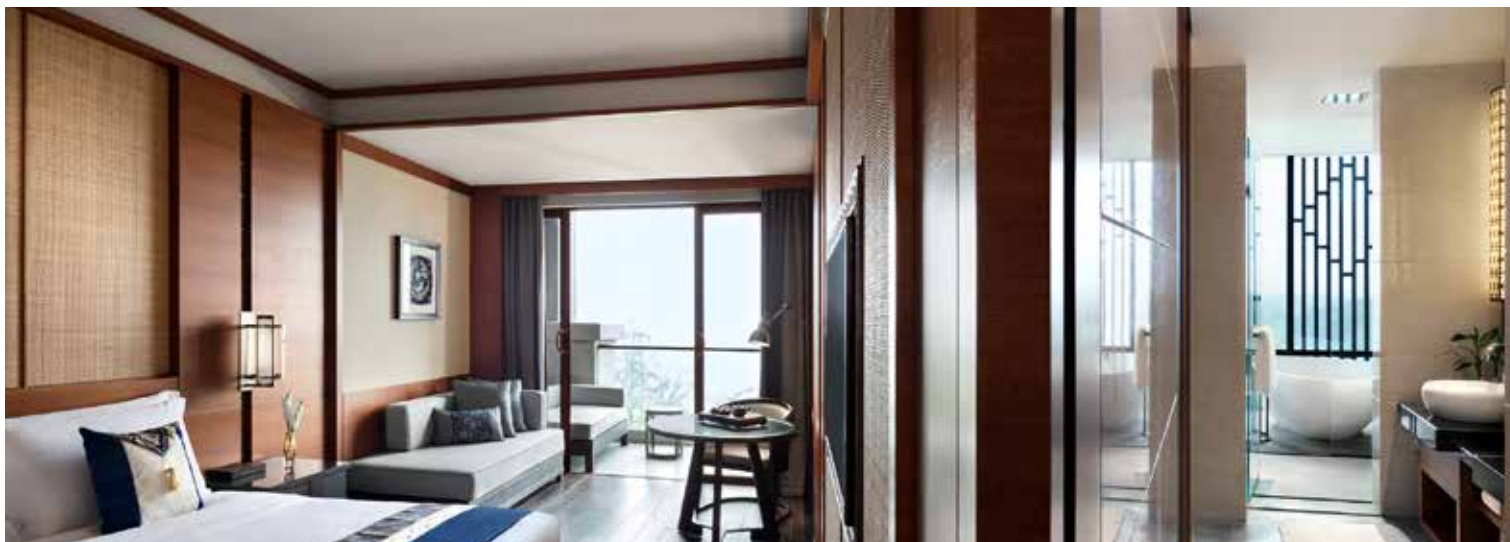


## LOCATION

Located in southwest China's Guizhou province to the east of the Yunnan-Guizhou Plateau, Guiyang, known as the Forest City, offers a gateway to astonishing nature and 2,000 years of history.

**Management:**  
**Ownership:**

Anantara Hotels, Resorts & Spas  
China Railway Group Guizhou Tourism & Culture  
Development Co. Ltd.



## ACCOMMODATION

A choice of rooms, suites and pool villas blend cultural authenticity with modern comforts and signature amenities. Warm and understated elegance feels at ease with the natural surrounds. Windows open to garden nature with awe-inspiring mountains. Effortless luxury provides everything you expect, and more.

### Deluxe Garden View Room

These oriental-inspired rooms provide a welcoming haven of world-class comfort. Work at the desk, or relax on the balcony with a garden view. The luxury bathroom features a rain shower and oversized bathtub. Indigenous touches include a traditional Chinese tea set.

### Deluxe Pool View Room

Relax with a pool view on the balcony. Sleep well in the luxury bedroom. Freshen up with an invigorating rain shower or soak in the oversized tub. Work at the desk or surf the net. Rest and watch a movie. Enjoy mini bar drinks, coffee and traditional Chinese tea. Connecting rooms are ideal for families and friends.

### Deluxe Resort View Room

The balcony, furnished with a table and chairs, offers a striking panoramic scenery. Inside, a luxury bedroom and bathroom are accompanied by a work desk, creature comforts and an appealing choice of refreshments.

### Deluxe Garden Terrace Room

A private enclosed garden terrace lets you lounge on the sofa and dine in natural seclusion. Inside, a deluxe bedroom joins a luxury bathroom. Catch up with work at the desk. Enjoy mini bar and Chinese tea beverages.

### Garden View Suite

Admire spectacular views of distant mountains from your private balcony, furnished with a sofa, a table and two chairs. Relish the extra space and luxury of a master bedroom, a generous bathroom and elegant living room.



## Garden Terrace Suite

The natural privacy of an enclosed garden terrace with a sofa, table and chairs lets you lounge and dine outside. Spacious luxury inside extends from a king bedroom and en-suite bathroom, to a comfortable living room.

## Anantara Suite

These signature suites pair impressive space, natural luxury and cultural authenticity. Panoramic views are enjoyed amidst fresh air on the balcony, furnished with a sofa, a table and two chairs. Comfortable indulgence inside is designed for work, relaxation and cultural inspiration.

## One Bedroom Pool Villa

Contemporary architecture has an oriental influence. The enclosed garden terrace features a plunge pool.

## Three Bedroom Pool Villa

Providing the ultimate sanctuary for families, friends and groups, this luxurious two-story residence reveals mountain scenery. An enclosed garden terrace ensures natural exclusivity and features a private pool, four sundecks, an outdoor sofa and dining table. Inside, three generous en-suite bedrooms afford every comfort. Catch up on business in the work room. Work out in the gym or request spa pampering in the massage room. A living room with a balcony and dining table, as well as a pantry, makes it easy to entertain.

### Rooms Feature:

- King size bed or twin beds
- Work Desk
- Mini Bar
- Bathroom with a rain shower, dual basins and oversized bathtub
- 42"- 55" LCD television with international satellite channels
- High speed internet access
- Tea
- Traditional Chinese tea set
- Twice daily housekeeping service
- Children's amenities available upon request





ROOM TYPE	TOTAL		ROOM SIZE (SQM)	MAX CHILDREN	MAX ADULTS	CONNECTING ROOMS
Deluxe Garden View Room	18 Rooms		50	1	2	N/A
	6 Kings	12 Twins				
Deluxe Garden Terrace Room	44 Rooms		60	1	2	Yes
	44 Kings	- Twins				
Deluxe Pool View Room	51 Rooms		50	1	2	Yes
	30 Kings	21 Twins				
Deluxe Resort View Room	74 Rooms		50	1	2	Yes
	47 Kings	27 Twins				
Garden View Suite	9 Suites		95	1	2	N/A
	9 Kings	- Twins				
Garden Terrace Suite	6 Suites		105	1	2	N/A
	6 Kings	- Twins				
Anantara Suite	5 Suites		125	1	2	N/A
	5 Kings	- Twins				
One Bedroom Pool Villa	10 Villas		260	1	2	N/A
	10 Kings	- Twins				
Three Bedroom Pool Villa	1 Villa		1,200	3	6	N/A
	2 Kings	1 Twins				





## DINING

At Anantara Guiyang Resort, culinary journeys are diverse and distinctive – matching the tastes and curiosity of the guests we proudly serve.

Curated with passion and attention to detail, menus read like a mouthwatering journey. Authentic Thai and Chinese specialties are refined by seasoned chefs. Asian and Western fusion dishes excite inquisitive palates. International tastes inspire, from connoisseur dining to a casual floating brunch in the pool.



### Fanjing

Enjoy world flavours all day in the elegant dining room or outside terrace with mountain views. Savour breakfast buffets and modern Western, Asian and fusion cuisines for lunch and dinner.

Breakfast: 6.00 am – 10.00 am  
 Lunch: 11.00 am – 2.00 pm  
 Dinner: 5.00 pm – 9.00 pm  
 Cuisine: Asian and Western fusion cuisines



### Siam

At this signature Thai restaurant, gourmet ingredients are woven into timeless recipes. Regional specialties are served in a medley of dishes, and shared the traditional Thai way.

Dinner: 5.00 pm – 9.00 pm  
 Cuisine: Thai





## The Ancient Town

Our specialty Chinese restaurant serves delicacies from Guiyang, Sichuan and Hunan. Dine in one of five private rooms, enjoying tasteful authenticity and comfortable elegance.

Lunch: 11.00 am – 2.00 pm

Dinner: 5.00 pm – 9.00 pm

Cuisine: Chinese



## Jia Xiu Lounge

Retreat to our splendid lobby lounge for your morning coffee, refreshing drinks and light bites throughout the day, and in the evening, fine wines, cocktails and nightcaps.

Opening hours: 10.00 am – 11.00 pm

Cuisine: International beverages and light bites menu



## The Dragon Palace Bar

Take a break in the shady indoor pool bar. Relax on lounge style seating with classic beverages, healthy detox drinks, specialty teas and an international menu of light bites.

Opening hours: 11.00 am – 6.00 pm

Cuisine: International beverages and light bites menu



## Azalea Bar

Unwind in a casual haven with tasty poolside pleasures. Enjoy freshly squeezed juices, chilled beers, wines and cocktails, paired with snacks and light meals.

Opening hours: 11.00 am – 6.00 pm

Cuisine: International beverages and light bites menu



## Dining by Design

Indulge in a Floating Feast of epicurean snacks and fine beverages, served in the pool. Dine in a private pavilion, with a private chef and butler tailoring the perfect occasion.

Private dining - advanced reservation required



## CONFERENCE AND MEETING FACILITIES

For globetrotting business professionals, Anantara Guiyang Resort's world-class facilities and inspirational settings suit every kind of corporate and social function. Our warm hospitality and impeccable service provide everything you expect, and more.

Combining authentic luxury with tailored concepts and personal touches, meetings and events are executed seamlessly. Cultivate success with stimulating team building activities. Commemorate achievements and impress discerning guests with prestigious celebrations. Let us craft a unique corporate retreat itinerary, in accordance with your group's specific needs.

MEETING ROOMS	AREA		DIMENSION (WXL)		THEATRE	CLASS ROOM	U-SHAPE	BANQUET 10
	SQM	SQFT	METRES	FEET				
Huang Guo Shu	460	4,953	27 x 17	88.6 x 55.9	400	300	200	200
Xiao Qi Kong	60	646	10 x 6	32.8 x 19.7	50	30	18	20
Zun Yi	50	538	10 x 5	32.8 x 16.4	N/A	N/A	16	N/A





## Venues

### Huang Guo Shu Ballroom

The 460-sqm ballroom impresses with generous space and a high ceiling, elegant décor and gleaming natural wood. Enjoy an abundance of natural light, refreshing views of nature and direct access to the gardens. Seating as many as 400 delegates in theatre style, 300 in classroom, 200 for a round table set up and 200 in a U-shape layout, this grand venue's flexible options include dividing the space in half.

### Xiao Qi Kong Meeting Room

This 60-sqm meeting room inspires with a natural design and accommodates between 18 and 50 guests in flexible seating arrangements.

### Zun Yi Boardroom

Style, natural design and function meet in professional harmony at the resort's 50-sqm boardroom, which comfortably seating 16 executives.







## WEDDINGS AND SPECIAL OCCASIONS

Romantic celebrations draw on imaginative concepts and reflect individual style. Plan the most romantic marriage proposal. Orchestrate a wedding day that represents your values – choosing a traditional Chinese or beautiful Western ceremony, a lavish ballroom party or garden simplicity. Let us tailor every element to suit your tastes, from décor, music and entertainment, to the culinary presentation and beverages for your toast. Wedding photo shoots are framed by mountainous scenery surrounds. Married life starts with exciting honeymoon luxury, and continues with unforgettable anniversaries.

### Wedding Venues

#### Huang Guo Shu Ballroom

Offering an impressive 460-sqm of elegant space for up to 200 guests, the ballroom exudes a castle-like charm with stunning chandeliers and cathedral-like windows. The outdoor terrace provides access to the resort's exotic gardens and grand gazebo, and reveals spectacular views distant mountains.

#### Outdoor Venues

A choice of scenic outdoor wedding venues lets each couple set the perfect stage for a celebration embraced by nature. Enjoy the romance of a chapel with a garden terrace. Exchange vows in a stylish setting beside the river. A poolside pavilion offers an intimate retreat.





## RECREATION AND LEISURE

At Anantara we inspire the freedom to pursue your passions and interests – or do absolutely nothing at all. Take advantage of our resort’s exceptional leisure facilities. When you need to explore, we’ll be your insider guide and take you behind the scenes, or suggest the ideal trip for you to venture out independently.

### Resort Activities

Experience the joy of no two days being the same, whatever your holiday style. Creative fun engages young minds. For a dash of culture, try a professional Chinese cooking class or play majiang with companions. Go with the flow in a yoga class. Choose to swim in our indoor or outdoor pools. Our haven of natural beauty makes exercise a scenic pleasure.

- Cycling, Jogging and Picnics in the CREC Eco City Area
- Swimming Pools
- Children’s Club and Youth Club
- 4 Majiang Rooms
- Gym (6.00 am - 10.00 pm)
- Yoga
- Spice Spoons Cooking Classes





## Local Area Excursions

Take advantage of our insider tips to map out your own travel trips. Gain a richer appreciation of what you see, hear and taste with an expert guide. Relish chance encounters as you delve behind the scenes of local life. Trace thousands of years of dynastic rule. Discover ancient landmarks and the exploits of legendary figures. Witness thriving ethnic customs. Shop for distinctive souvenirs. Sample truly local flavors, from potent Maotai liquor to delightful house tea brews.

### In Guiyang

#### Jiaxiu Tower

A landmark of Guiyang is Jiaxiu Tower, also called the First Scholar's Tower. The building is in the bustling streets rare quiet and beautiful place, in the scenic area antique, outside the scenic area the tall building stands in great numbers, after nightfall brilliantly illuminated, the person's shadow rocks, becomes the historical culture and the modern civilization focus point.

#### Qianling Park

Qianling Park is one of the biggest inner-city park in China. It is a natural forest park in Guiyang with high mountains and a crystal clear lake. In addition to such natural scenes as ancient trees, lakes, ponds and lotus, the park boasts many spots of historical interest. It is China's earliest and largest forest park ever built in a city. In summer, as the temperature is two degrees lower than the other part of the city, the park is an ideal summer resort.

#### Ancient Town of Qingyan

Qingyan ancient town, Guizhou one of four big town, is located in the southern suburbs of Guiyang City, built in the Ming Hongwu ten years(1378), was originalty a military fortress. In the ancient town of ingenious design, exquisite workmanship of the Ming ang Qing Dynasties of ancient building staggered clouds, temples, pavilions, carved beams and painted rafters eaves and white flight angle.



## Beyond Guizhou

### Xijiang Miao Village

The largest Miao village in all of China is divided by the Baishui River and home to more than 1,000 traditional houses, spread in continuous rows across the hills.

### Huangguoshu Waterfall

The biggest waterfall in China, and indeed all of East Asia, impresses with 360-degree views, karst caves, forest and serene valleys.

### Longgong Cave

This karst cave is famous for its dramatically shaped stalactites and stalagmites.

### Zunyi Meeting Place

Named after the famous Zunyi meeting held by the Red Army and CPC in January 1935, this monument is of great historic importance and features the General Political Department of Red Army, the former residence of Mao Zedong, the exhibition hall of Zunyi Meeting and the China Soviet Bank.

### Maotai Town in Renhuai

This national liquor culture city features classical architecture, the largest Chinese character carved on a cliff and also the largest Maotai liquor bottle, which stands at 31 metres high and encases a spiral staircase.

### Fanjing Mountain

Upholding Fanjing's reputation as the Ecological Kingdom and a sacred Buddhist place, this national nature reserve covers an enormous 567 square kilometres of beautiful mountainous landscape.

### Xifeng Concentration Camp Memorial Hall

Relive the heroic stories of one of the largest and most secretive communist prisons set up by the army controlled areas of the Kuomintang during the war against Japan.

### Ancient Town of Zhenyuan

Revealing a history that dates back more than 2,000 years, the ancient bridge, residences, gates and walls of Zhenyuan are fine examples of classical architecture, while the Wuyang River carves a picturesque S through this heritage town.





## ANANTARA SPA

Discover Anantara's world class expertise, cultural passion and appreciation of nature as we pamper you with unique spa journeys.

Hide away in a luxurious treatment suite of oriental elegance. Close your eyes and tune out the world, or admire vivid mountain views. Put your needs in the intuitive hands of highly skilled therapists. Choose from an extensive treatment menu of diverse appeals. Select a journey to suit your mood. Experience China's ancient healing traditions. Reap holistic benefits with trusted age-old therapies from across Asia. Relax and beautify with modern western techniques that deliver dynamic results.

Open from 11.00 am – 11.00 pm

### Spa Facilities:

- 5 Single Treatment Rooms
- 1 Double Treatment Room
- 1 Reflexology Area for up to four persons







## AIRPORT TRANSFERS

The resort is just a 30-minute drive from Guiyang City and its train station, and a mere 15 minutes from Guiyang Longdongbao International Airport. Easy accessibility by road opens a gateway for independent travelers who prefer to self-drive and enjoy the scenic route.

### Voltage

220 - 380AC, 50 Hertz

### Currency

Chinese Yuan (CNY)  
US\$ 1 = CNY6.5\*  
\*rate subject to fluctuation

### Time Zone

GMT plus 8 hours

### Climate

Guiyang has a pleasant subtropical climate with fresh air, plenty of sunlight and ample rainfall, no intense heat in summer and no severe cold in winter.

The average temperature is 15°C (59°F). July is the hottest month at an average 24°C (75°F) and January is the coldest with an average of 4.6°C (40°F). Of the four distinctive seasons, winter is the longest.

Though the weather is agreeable year-round, the changeable conditions of the Yunnan-Guizhou Plateau. It is recommended to take waterproof, windproof, light and warm clothing, as well as sun protection.