



LAYAN RESIDENCES  
BY ANANTARA



## LAYAN RESIDENCES BY ANANTARA

Experience true island exclusivity in one of our 15 seaview residences with panoramic views of Layan Beach and the Andaman Sea. Relish serene seclusion or socialise and entertain, hosting elegant pool parties by day and rooftop soirees at night. Call upon your live-in butler to take care of every need. The five-star facilities and services of Anantara Layan Phuket Resort provide a world-class lifestyle.

Opening Date:	January 2016
Address:	168 Moo 6, Layan Beach Soi 4, Cherngtalay, Thalang, Phuket 83110 Thailand
Telephone:	+66 (0) 7631 7200
Facsimile:	+66 (0) 7631 7299
Central Reservations:	+66 (0) 2365 9110
Central Reservations Email:	reserveanantara@anantara.com
Email:	phuketlayan@anantara.com
Web Address:	<a href="http://anantara.com/en/layan-residences-phuket">anantara.com/en/layan-residences-phuket</a>



## LOCATION

Situated high on a hillside overlooking Layan Beach, Layan Residences by Anantara offers an incomparable location with sweeping views of Pristine Sirinath National Park. Experience one of the island's most exclusive areas, renowned for its high end lifestyle, coastal beauty and national park surrounds. This prime location is also just 20 minutes from Phuket International Airport, with convenient access to a host of attractions.

Management:

Anantara Hotels, Resorts & Spas

Ownership:

MHG Phuket Limited

Managing Director:

Frederic Varnier

[fvarnier@anantara.com](mailto:fvarnier@anantara.com)

Director of Sales

Nararat Meechaichana

[nararat\\_me@anantara.com](mailto:nararat_me@anantara.com)



## ACCOMMODATION

15 uniquely designed seaview residences depict a modern interpretation of classic Asian design. Exceptional living spaces and incredible coastal vistas are showcased by expansive windows, sweeping verandas and rooftop elegance. Residences range from three to seven bedrooms, providing the ultimate island retreat for families, friends and groups.

### Two Bedroom Sea View Residence

This decadent private escape lets you tower over the hillside in exclusive luxury. Gaze out onto sparkling Andaman views from two master bedrooms. Lavish indoor-outdoor leisure space abounds. Immerse yourself in the infinity edge pool and rooftop decks with ocean views. Explore the island and then return to dine indoors or al fresco, taking advantage of your own kitchen, outdoor barbecue and butler service. Sunbathe, swim, celebrate or hide away in your ultra-indulgent personal playground.

### Three Bedroom Sea View Residence

Offering 1,695 – 1,894 sqm of space, this luxury villa affords every comfort and indulgence, including the services of a butler. Rooftop decks offer the perfect ambience for sunset relaxation. Upstairs in the villa, a master bedroom, modern lounge and dining rooms all open onto the sweeping outdoor deck with a stunning infinity pool and Thai dining sala. Downstairs, two bedrooms are joined by a study, alongside a fully equipped kitchen.



## Four Bedroom Sea View Residence

Contemporary aesthetics are infused with heritage touches in an ingenious layout. Enjoy 1,817 sqm of space including three downstairs bedrooms and a media room for relaxed movie time. Upstairs, the master bedroom is accompanied by spaces for socialising. Float in your private swimming pool, resting at its infinity edge to drink in a coastal view. Dining is delectable with an outdoor barbecue and your very own butler, serving meals in your stylish dining room or outside sala. Rooftop decks reveal an unhindered panorama.

## Five Bedroom Sea View Residence

This superb 2,148 sqm island sanctuary offers a unique taste of luxury. Upstairs, two master bedrooms are joined by elegant living and dining rooms overlooking the pool deck. Sunbathe in total privacy and then cool down in a generous infinity pool. Later, dine together in your outdoor sala with coastal views. Downstairs, three bedrooms are accompanied by a fully equipped kitchen. Finally, your live in butler provides unobtrusive service whilst tending to your every need.

## Six Bedroom Sea View Residence

Revel in a private six-bedroom sanctuary of 2,600 sqm with panoramic views of Layan Bay. Upstairs and downstairs bedrooms flow to lavish indoor and outdoor spaces – from the living and dining room to lounges, rooftop decks and an open-air sala, alongside your infinity edge swimming pool. Savour the discreet and polished service of your live in butler as you enjoy panoramic views of hillside jungle paradise.

## Seven Bedroom Sea View Residence

Luxuriate in 2,600 sqm or more of space. This private escape welcomes you to gaze over sparkling Andaman views from three master bedrooms upstairs as well as an additional four downstairs bedrooms. Lavish indoor-outdoor leisure space abounds. Immerse yourself in the infinity edge pool and rooftop decks with ocean views. Explore the island and then return to dine indoors or al fresco, taking advantage of your own kitchen, outdoor barbecue and butler service. Sunbathe, swim, celebrate or hide away in your ultra-indulgent personal playground.



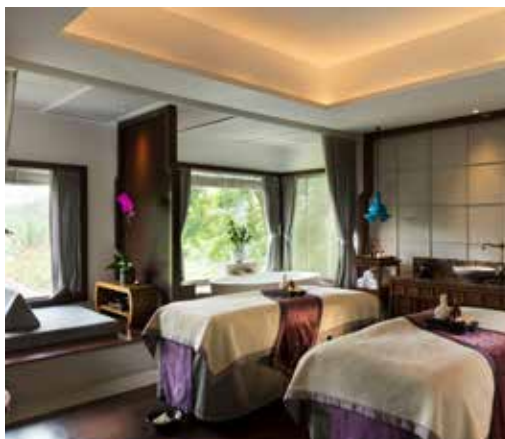


## ACCOMMODATION FEATURES

- Panoramic Andaman Sea views
- Two-storey residence with rooftop decks
- Spacious bedrooms, each with a private en-suite bathroom
- Living room
- Dining room
- Kitchen
- 21-metre infinity swimming pool
- Outdoor sundeck
- Outdoor shower
- Outdoor Thai sala with a dining table for 6 – 8 guests
- Outdoor barbecue
- In-residence breakfast
- Covered carport
- Apple TV
- WiFi
- Mini bar (non-alcoholic beverages and snacks)

## GUEST SERVICES

- 24-hours live in butler service
- In residence spa
- Babysitting on request
- Access to all resort facilities
- Laundry service
- 24-hour security
- Foreign exchange service





## DINING



### Dee Plee

Our signature restaurant serves vibrant Thai dishes with divine flavor pairings. These intricate creations have been perfected to blend spice and zest by our experienced chefs. Savour their masterpieces for dinner, and have our Wine Guru match a fine wine with your meal.

Opening hours: Breakfast 6.30 am – 10.30 am  
Lunch 11.00 am – 6.30 pm  
Dinner 6.00 pm – 11.00 pm

Cuisine: Authentic Thai

Capacity: 135



## Breeze Restaurant and Bar

Enjoy a refreshing drink from the pool's cool waters. Choose from cocktails and juices, accompanied by light snacks, to keep you replenished while lounging in the sun.

**Opening hours:** 8.00 am – 12.00 midnight  
**Cuisine:** Light snacks and drinks  
**Capacity:** 30



## In-Villa Barbecue by Design

Available exclusively for villa guests, enjoy creating a flame grilled meal yourself, or call upon an expert chef to do the cooking for you. Savour succulent meats and fresh seafood with delicious side dishes and condiments.



## Dining by Design

Experience a dining journey like no other. Choose your dream location and we'll create a picturesque dining setting under the stars. Browse a collection of menus, or customise a menu with our chef to suit your tastes and preferences. Then share an unforgettable meal with private butler service.



## Age

Age takes you on a culinary journey along the most exquisite meats and the finest locally caught seafood, paired with the very best wines from around the world. To dine here is to commemorate life's defining moments.

**Opening hours:** Dinner 6.30 pm – 10.30 pm



## Mojito

Choose from 25 versions of the classic cocktail—the perfect tropical accompaniment to lazy days spent by the sea and balmy evenings watching the sun set over Layan Beach.

Opening hours: 8.00 am – 7.00 pm



## Zuma

A culinary favorite the world over, contemporary Japanese restaurant zuma presents an exclusive popup experience at Anantara Layan. From mid-December to mid-February, join us for convivial beachfront dining and discover how zuma creates unique sushi artistry with authentic flavors. Select from robata grill, signature seafood, Japanese Wagyu beef and Daikoku tasting menus and enjoy delicious and distinctive cuisine, perfect for sharing

Opening hours: 14 December 2019 – 15 February 2020  
Lunch 1.00 pm – 4.00 pm  
Dinner 6.00 pm – 10.30 pm





## MEETING

Our luxury beach resort is the ideal location to stimulate creativity and outside-the-box thinking. Hold an executive meeting in the boardroom, which features state-of-the-art facilities and has everything you need for up to eight people. Productivity will be at its best in this serene and quiet environment.

## TAILORED EVENTS

Our experienced planners ensure that each event is impeccably executed, with a highly personalised approach. Choose the perfect combination of decoration, gourmet menus and entertainment. Select one of our resort locations for a meeting, reception, private dinner or lavish banquet. Dine in beachside bliss or dance the night away in our landscaped gardens. Let our idyllic surroundings inspire you and your guests, and our expert team fine tune every last detail.

## WEDDING

Make your island wedding dream a reality, either on the soft sands of Layan Beach or in our exquisite cliff-side chapel. Say “I do” in an elegant western ceremony or with traditional Thai rituals. Afterwards, celebrate with an intimate evening for two or throw a lavish party with sublime cuisine and unforgettable entertainment. With a dedicated wedding planner taking care of every detail, the possibilities are limited only by your imagination.

Anantara’s inspired celebrations also include creative proposals, once-in-a-lifetime honeymoons and memorable anniversaries, with a stunning choice of luxury accommodations and romantic experiences.



## LEISURE

The pleasures of a prestigious residence extend to the five-star facilities and services of Anantara Layan Phuket Resort. Immerse in local culture with Muay Thai kick boxing and Thai cooking classes. Enjoy the serenity of yoga or kayaking across the bay. Explore new horizons aboard a yacht in the Andaman Sea. Sensual pampering awaits at Anantara Spa. Some of the island's finest dining experiences include Dining by Design with a private chef and butler, in a beach cabana by the waves or our private hillside chapel.

- Spice Spoons – Anantara cooking school
- Wine tasting journeys
- Anantara Spa
- Slumber Guru
- Muay Thai kick boxing stadium
- Swimming pools
- Fitness centre
- Yoga classes
- Extensive water sports, including scuba diving, snorkeling, kayaking, windsurfing, hobie-wave catamaran and schiller bike
- Beach activities – Beach volleyball, Beach football
- Major Affair – Luxury chartered yacht 90-foot Sunseeker
- Siam Seas – 36-foot speedboat
- Chang Club for children
- Library
- Boutique
- Wedding chapel
- Meetings and event
- Tennis court
- Bicycle for adult and kids
- Entertain Me activities
- Layan 1 – 12 foot dinghy



## ANANTARA SPA

A sanctuary within a sanctuary, Anantara Spa offers the perfect setting for rejuvenating wellness and pampering relaxation. Put your wellbeing and beauty desires in the hands of therapists who are trained to the highest international standards. Embark upon journeys that are tailored to your individual needs, enriched by our personalised service. Hideaway in one of seven treatment suites, or treat yourself to salon services, including manicure and pedicure treatments. Indulge in a facial for youthful radiance. Revitalise every inch of skin with scrubs and wraps. Surrender to healing massages from ancient Asian wellness traditions and revered western techniques, or escape the limits of time with a carefully crafted package.

### SIGNATURE SPA TREATMENT

#### Layan Orchid Signature Ritual

Soak in a Milky Bath that is laced with fresh purple royal orchids as you enjoy a private tea service. Customise the traditional Thai herbal compress treatment by selecting the fresh ingredients that will fill your compress pouch; choosing from healing sesame, hydrating almond, cleansing salt, mood uplifting kaffir lime peel and refreshing lemongrass.

### SPA FACILITIES

- Beauty salon
- 7 luxurious treatment suites
- Relaxation area
- Manicure and pedicure
- Tai Chi
- Aquafitness

Opening hours: 10.00 am – 10.00 pm



## AIRPORT TRANSPORTATION

Layan Residences by Anantara enjoys a serene location on Phuket's western coast in Sirinath National Park. Phuket International Airport (HKT) is just a 20 minute drive away, with regular flights offered daily to and from Bangkok by several domestic and international carriers. The airport also receives traffic from a limited number of international destinations.

Please note that Bangkok's Don Muang International Airport (DMK) re-opened only for selected domestic flights, while Bangkok Suvarnabhumi International Airport (BKK) remains Bangkok's gateway to all international flights. Passengers on flights to and from Bangkok should therefore confirm their airport of departure/arrival when making transfers or arranging pick-ups in Bangkok. We are pleased to arrange transfers to the resort.

## TRAVEL NOTES

**Voltage** 220 – 240AC, 50 Hertz

**Currency** Thai Baht (THB)  
USD 1 = THB 33\*  
\*rate subject to fluctuation

**Time Zone** GMT +7 hours

### Climate

November – February (Dry season) Temperatures range from 23°C to 31°C accompanied by refreshing winds. Natural fibres and breathable clothing are recommended.

March – May (Hot season) Temperatures range from 30°C to 35°C. Natural fibres and breathable clothing are recommended.

June – October (Monsoon season) Temperatures range from 24°C to 31°C. Refreshing rain showers of ten last for only a short period before the skies become sunny once again. Natural fibres, breathable clothing and light waterproofs are recommended.